

Torque Sensor 7300



High Performance PTO Sensor (Power Take-Off)

Measurement on the tractor power take-off



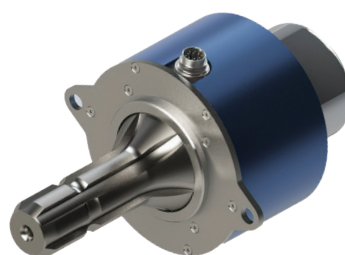
HIGH PERFORMANCE PTO SENSOR

With the new High Performance PTO Sensor 7300, NCTE offers a new and innovative solution in the area of torque measurement for the agriculture industry. The sensor is characterized by a high accuracy of 0,5% and a torque range of up to 3000 Nm.

The greatest challenge for sensors in agriculture is the working environment. The contactless measurement and the compact design with

protection class IP65 make the PTO sensor extremely robust against environmental conditions such as vibration, dirt and liquids. Its compact design has the dimensions 238mm and 120mm and needs less mounting space.

The sensor is so easy to install and lock without tools between the PTO shaft and cardan shaft that one person can operate it alone. High performance made easy.



GENERAL DATA

Torque:	0 - 3000 Nm	Direction of rotation:	CW and CCW
Speed:	≤ 1100 RPM	Operating voltage:	between 9V to 28V
Accuracy:	≤± 0,5%	IP protection class:	IP 65
Temperature range:	-40°C to + 85°C	Cutoff frequency:	at 2.500 Hz
Type of signals:	digital and analog	Overload reserve:	10%
Output signal:	0-10V, 4-20mA, CAN-Bus, USB	Toothing:	Compatible with standard 1 3/8" 6-fold toothing
Connection:	12-pin binder plug		



ADVANTAGES:

- Sensor developed specifically upon the requirements of PTO applications
- Compact and robust design for harsh environmental conditions
- Protection class IP65
- Sensor dimensions optimized to avoid additional mounting space
- Low weight of only 5.3 kg
- Tool-free mechanical assembly between the PTO shaft and cardan shaft possible
- Can be installed by one person independently
- Contactless measurement and maintenance free solution based on inverse magnetostriction technology
- PTO sensor insensitive to vibration, dirt and fluids (e.g. harvest juices)
- Reliable measurement under difficult conditions (e.g. high vibration or temperature)
- Availability of real time data